

K

K'

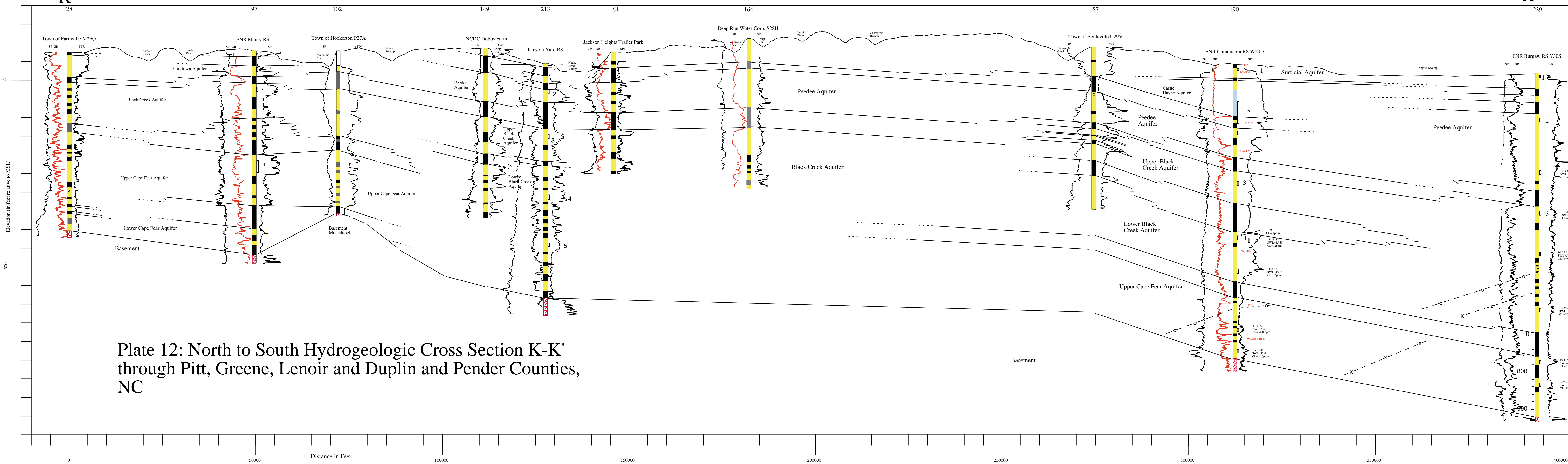
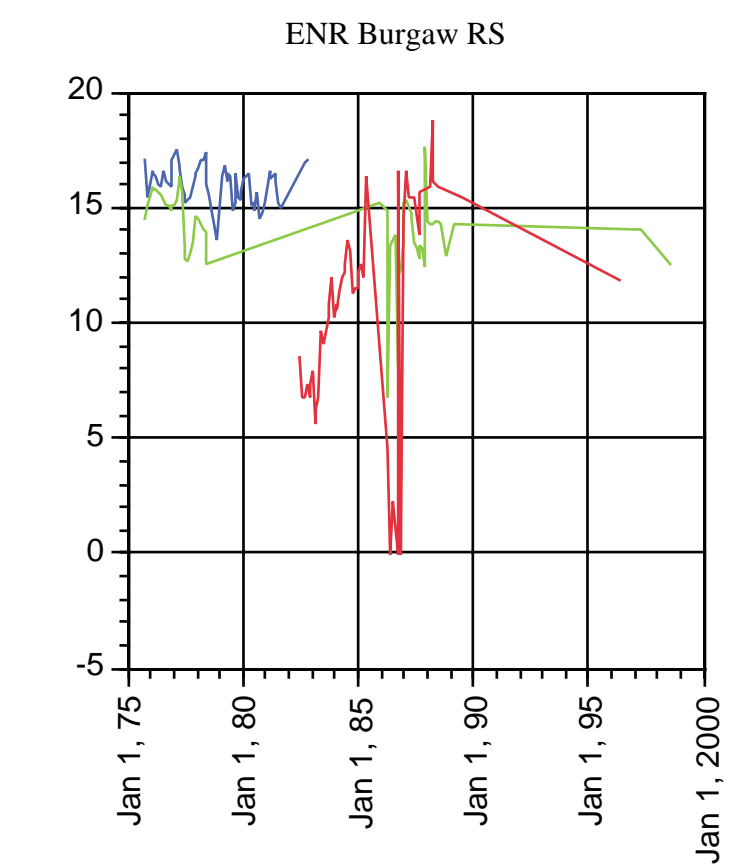
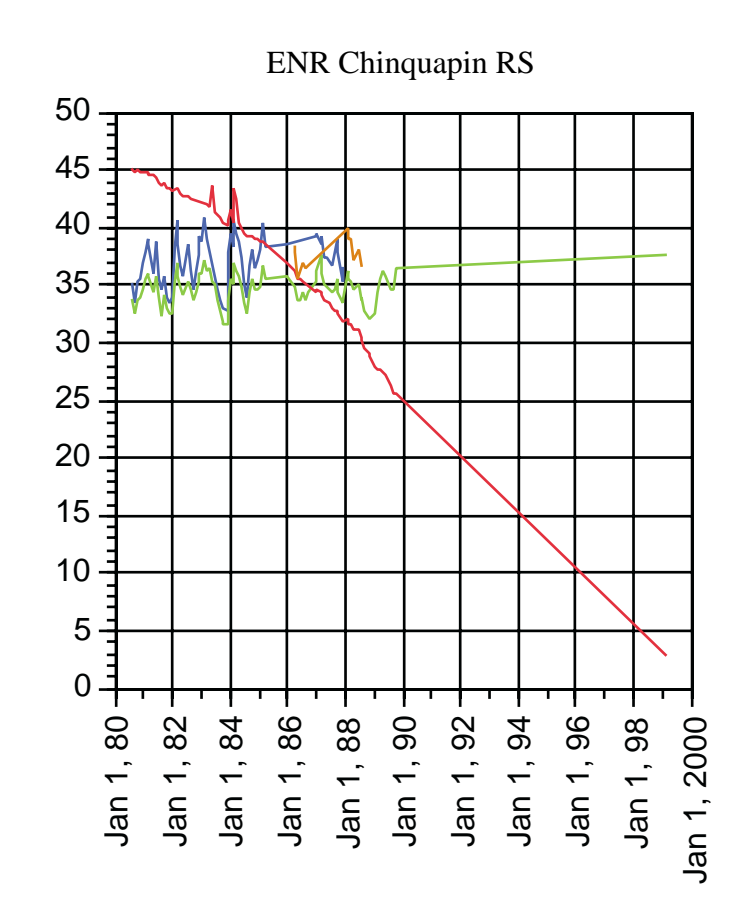
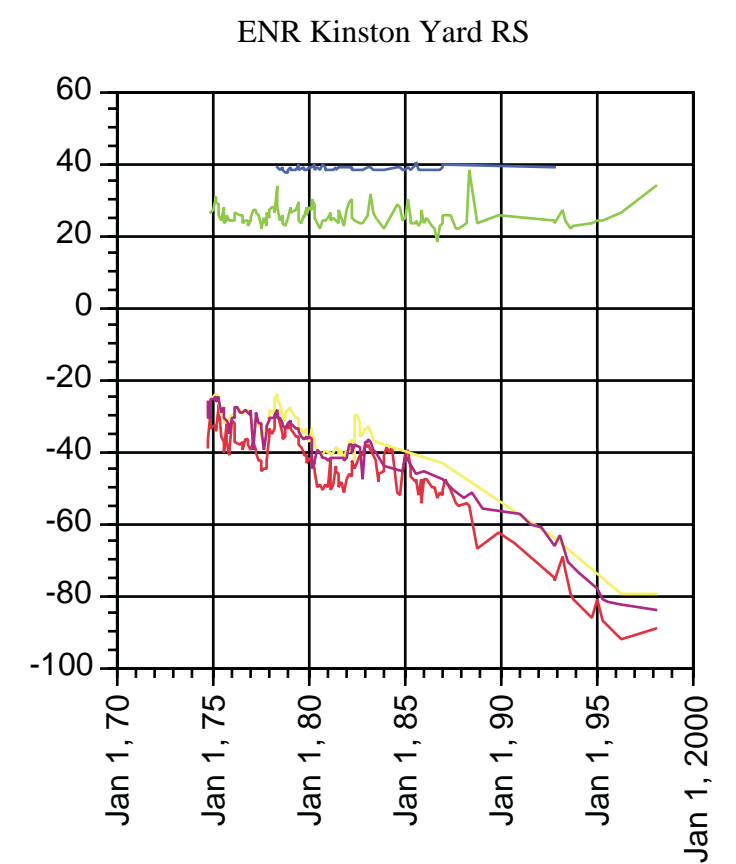
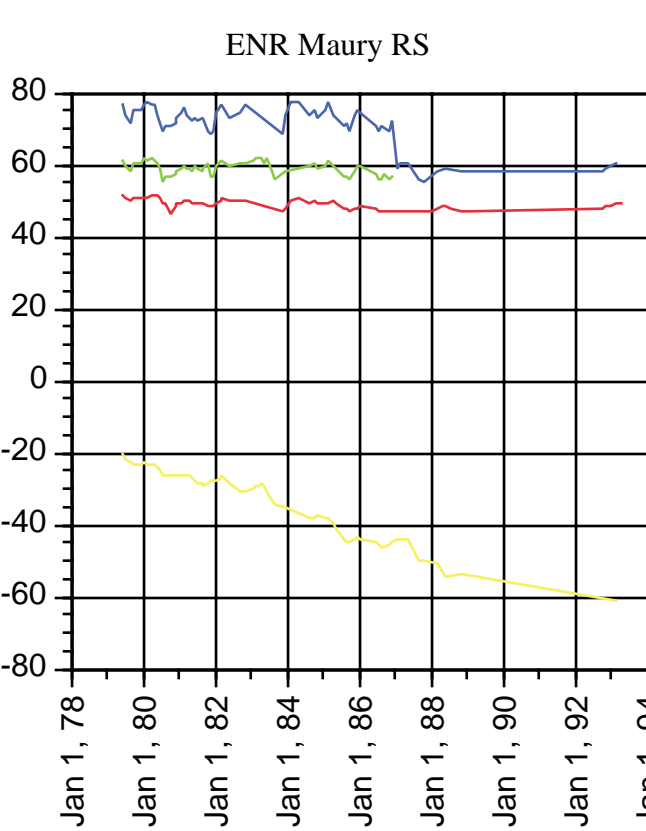


Plate 12: North to South Hydrogeologic Cross Section K-K' through Pitt, Greene, Lenoir and Duplin and Pender Counties, NC



Legend

- Sand
 - Sand and Gravel
 - Clayey Sand
 - Shell and Sand
 - Sand and Limestone Beds
 - Limestone
 - Sandy Limestone
 - Clayey Limestone
 - Clay
 - Bed and beds composed of silt, or silt, clay or sand/limestone combinations
 - Basement
- 250 ppm chloride interface
- 1000 ppm chloride interface