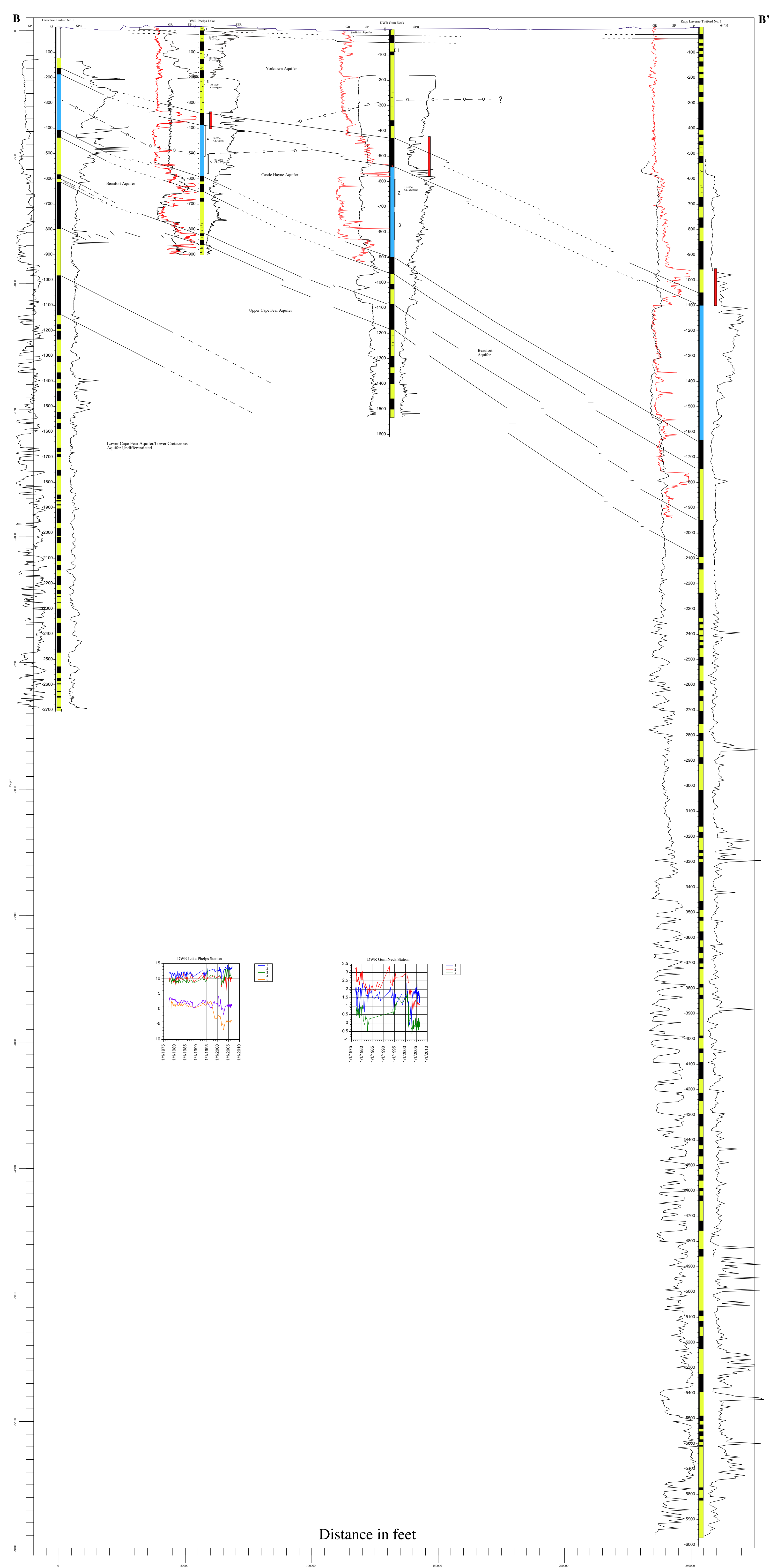


Plate 3. West to East Hydrogeologic Cross Section B-B' through Washington, Tyrrell and Dare Counties, NC

Legend

- Sand
 - Clayey Sand
 - Shell and Sand
 - Limestone
 - Clay
 - Bed or beds composed of silt, or silt, clay or sand/limestone combinations
 - Basement
-
- 250 ppm freshwater/saltwater interface
 - Gamma Ray curve correlation marker
- Gamma Ray log is shown in red

Elevation in feet relative to MSL



Distance in feet