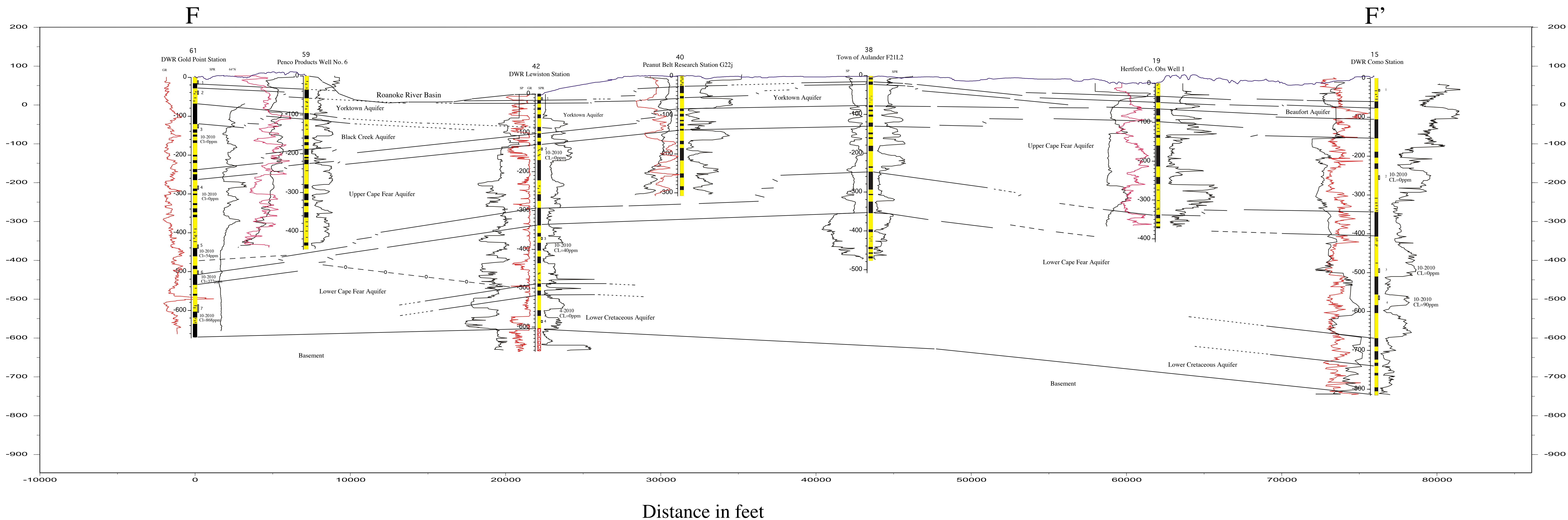


Elevation in feet relative to MSL



Distance in feet

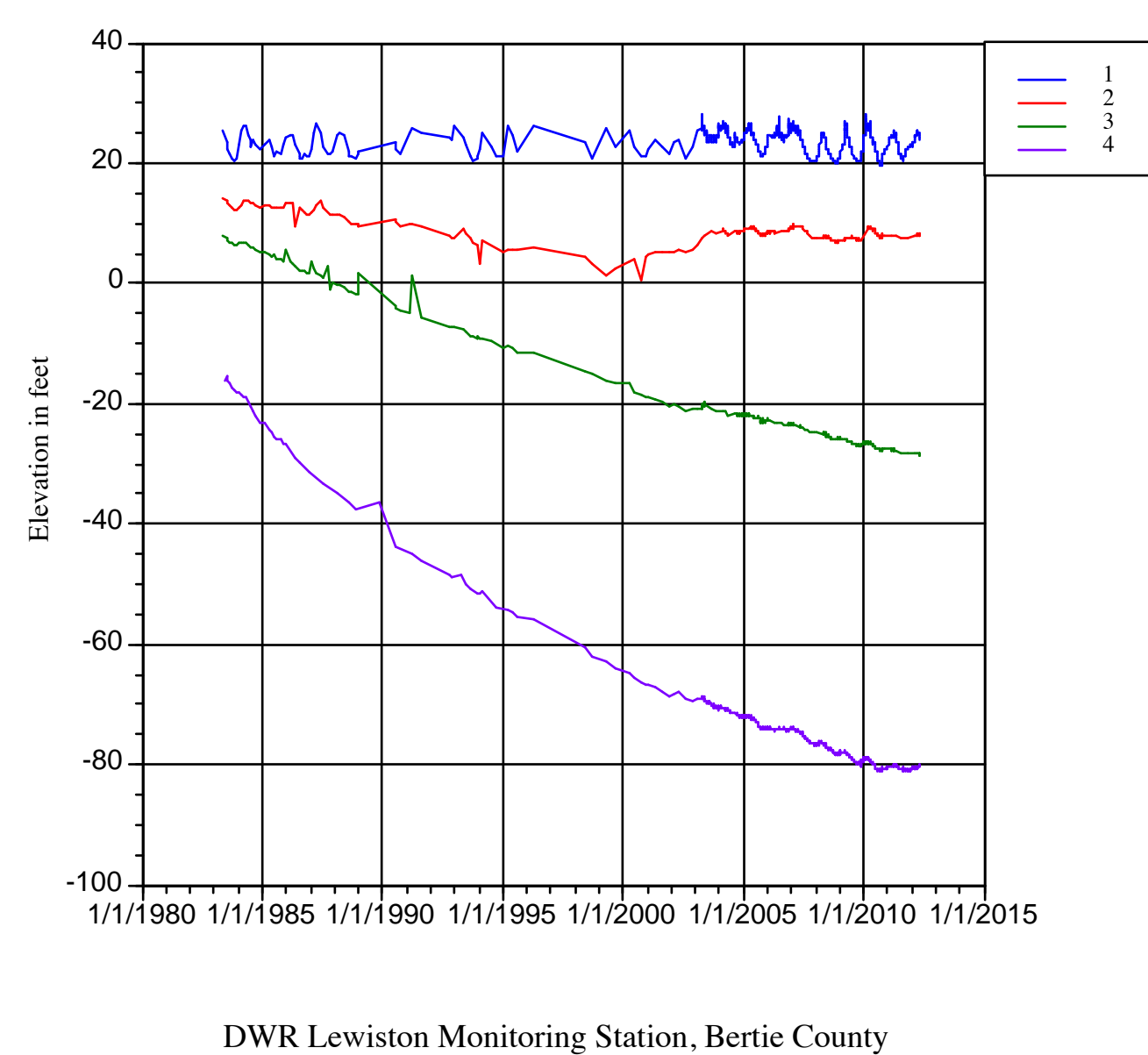
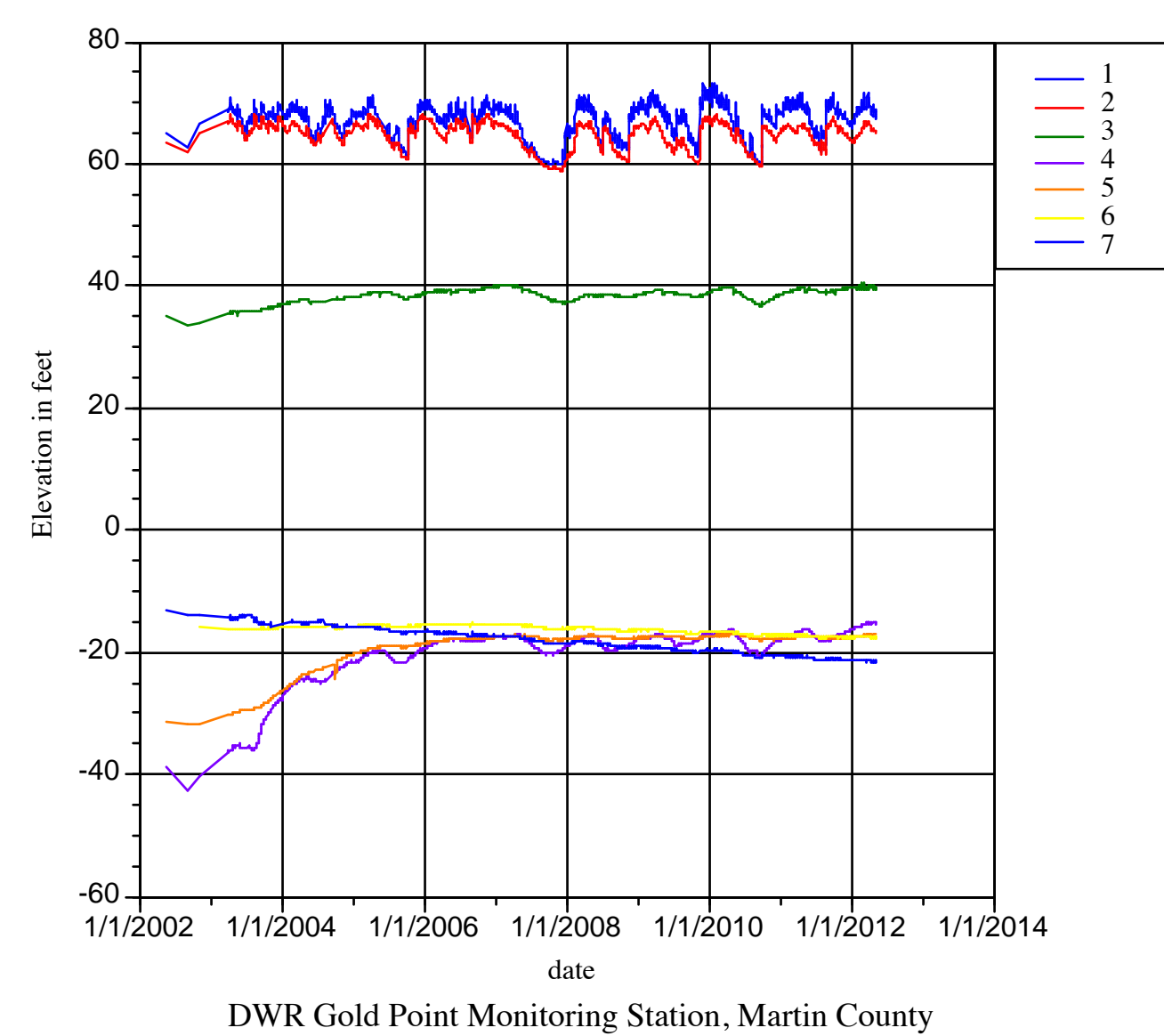


Plate 7. Southwest to Northeast Hydrogeologic Cross Section F-F' through Martin, Bertie, and Hertford Counties, NC

Legend

- Sand
  - Clayey Sand
  - Shell and Sand
  - Limestone
  - Clay
  - Bed or beds composed of silt, or silt, clay or sand/limestone combinations
  - Basement
- 
- 250 ppm freshwater/saltwater interface
  - Hydrogeologic Unit Top or Base Correlation
  - Inferred Hydrogeologic Unit Correlation

