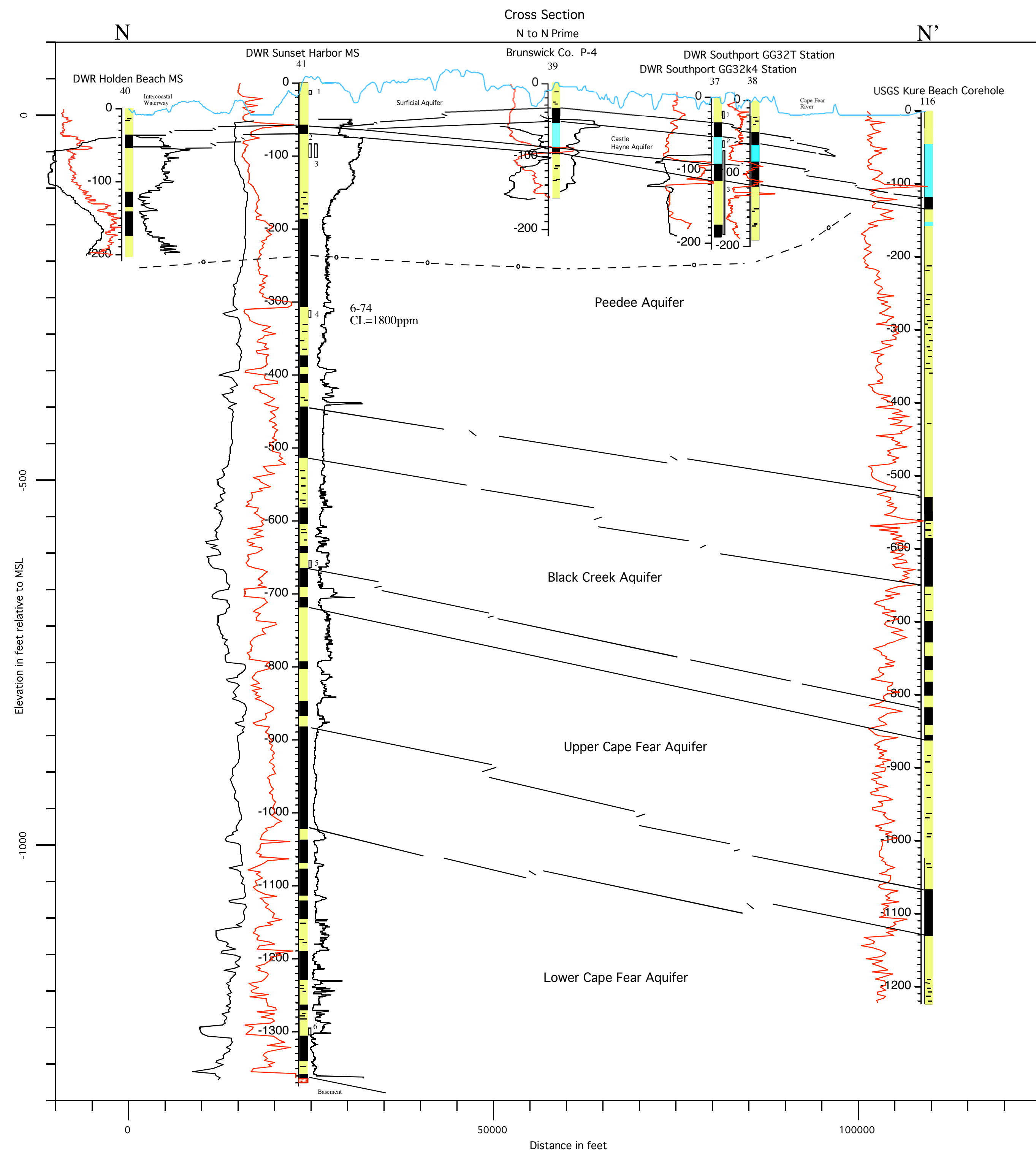


Plate 15. Southwest to Northeast Hydrogeologic Cross Section N-N' through Brunswick County, NC



Legend

- Sand
  - Sand and Gravel
  - Clayey Sand
  - Shell and Sand
  - Sand and Limestone Beds
  - Limestone
  - Sandy Limestone
  - Clayey Limestone
  - Clay
  - Bed or beds composed of silt, or silt, clay or sand/limestone combinations
  - Basement
- 250 ppm chloride interface  
 1000 ppm chloride interface

